

Sharp AR-M160/M205 IMAGERS™

AR-NB2 Advanced Networking Kit

SHARP

Maximize the capabilities of your AR-M160/M205 IMAGERS with advanced **network printing** and **full color network scanning**! With simple, plug-and-play operation, the AR-NB2 full-featured Networking Kit offers PCL6 network printing, one-touch network scanning, and advanced web-based management.* And with Sharp's easy-to-use utilities and driver software, your networked AR-M160/M205 IMAGERS can easily integrate into an existing network.



Sharp AR-M205

Sharp AR-M160

Ledger-Size Color Network Scanning

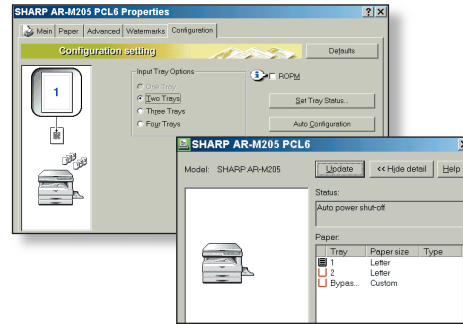
The AR-M160/M205 IMAGERS lead the industry with full color network scanning with resolution up to 600 dpi! With Sharp ingenuity, we've integrated multiple functions into a compact desktop design. And, with 6 convenient one-touch keys that can be used for Scan to E-mail, Scan to Desktop, and Scan to FTP, you can be more productive than ever! Also included is Sharpdesk™ Light Document Management Software, which allows you to edit, save, or distribute your scanned documents quickly and easily.

PCL6 Network Printing

With PCL6 print emulation you can rest assured that your documents will be processed quickly and have the formatting precision you expect. The PCL6 emulation is also backward compatible with PCL5e, so documents that you have already created will be printed with predictable results. With 64 MB standard memory, 600 dpi output resolution, and 10/100baseT networking, the AR-M160/M205 IMAGERS deliver razor-sharp quality documents over your network quickly and efficiently. And, with advanced print features that include booklet mode, front cover page mode, and N-up mode, you can produce high-quality documents that truly look professional.

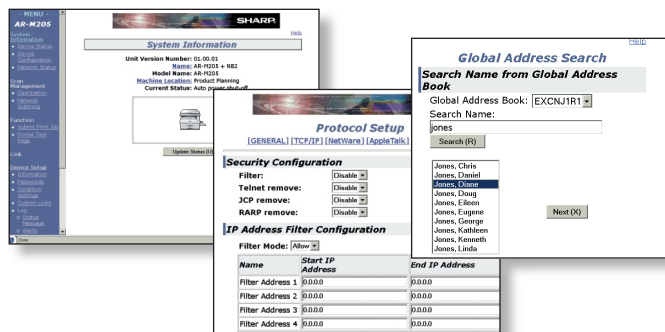
Intuitive Sharp Utilities

With Sharp's easy-to-use utility software, managing all these new features is easy. Printer Administration Utility is a network tool designed to help you manage any SNMP-compliant printer on your network. And with Printer Status Monitor, users can view network printer conditions right from their desktop through an easy-to-use graphical interface.



Enhanced Web-based Management

Sharp's web-based management feature provides the user and administrator with many time-saving tools, such as device configuration, scan destination management, feature control, Remote E-mail Diagnostics, IP/MAC Address Filtering, and more. The web-based management features are simple, yet sophisticated, and provide password protection at both the user and administrator level.



highlights



AR-NB2
Advanced Networking Kit

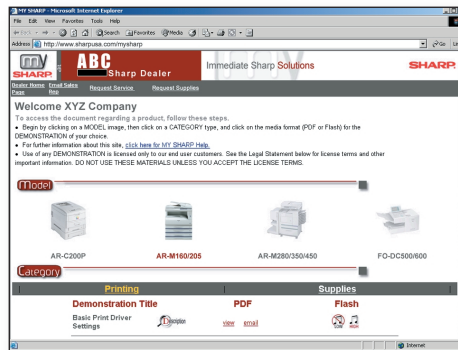
- › Full-Color Network Scanning
- › Sharpdesk™ Light Document Management Software
- › PCL6 Network Printing
- › Sharp Printer Administration Utility
- › Printer Status Monitor
- › Remote E-mail Diagnostics (R.E.D.)
- › Enhanced Web-based Management now with LDAP (Lightweight Directory Access Protocol) and IP/MAC Address Filtering

Digital
IMAGER
Advanced Document System

*AR-EB7 Function Upgrade Kit required

Stay up-to-date with My Sharp.

To make managing and maintaining your Digital IMAGER simple and easy, ask your local Authorized Sharp Dealer about My Sharp, a new dedicated customer-care website that allows you to download updates, locate resources and find information specific to your Sharp Digital IMAGER. (available for the AR-M160/M205 March 04)



My Sharp makes managing and maintaining your IMAGER quick and easy.

AR-NB2 Network Expansion Kit Basic Specifications

Host MFP	AR-M160 or AR-M205 Imager with AR-EB7 Function Upgrade Kit (required)
Standard Memory	64 MB standard, expandable to 320 MB with 256 MB DIMM
Client PC Requirements	IBM PC/AT compatible (Pentium 3/500 Mhz recommended)
Operating Systems	Windows 95/98/ME/NT4/2000, Windows XP Home Edition/Professional
System Requirements	Minimum operating specifications are determined by each operating system, as well as 100 MB available hard disk space (recommended), and monitor resolution 800 x 600 dpi, 10/100baseT Ethernet connection
Software Requirements	Internet Explorer 5.5 or higher, Netscape Navigator 6.0 or higher
Network Protocols	TCP/IP, IPX/SPX (Netware) and NetBEUI
Utilities	Web-based management through IMAGER Home page, NIC Manager, SPrint-2000, integrated software installer, Printer Administration Utility (PAU), Sharp Printer Status Monitor, On-line manual
Accessories	Mounting hardware, USB cable, and installation guide

Network Printer Function

Print Speed	AR-M160: 15 pages per minute ¹ AR-M205: 19 pages per minute ¹
Resolution	600 dpi
Emulation	PCL6/PCL5e
Rip Once Print Many	Yes (uses AR-EB7 memory 16 MB standard) ²
Network Interface	RJ45 Ethernet
Memory	Shared
Features	Duplex printing, N-up printing, fit to page, auto paper selection, booklet printing, front cover printing, image adjustment, watermark setting, and Printer Status Monitor

Network Scanner Function

Type	Flat head full color scanning system
Scanning Style	Platen/original feeder
Light Source	Cold cathode lamp
Resolution	Up to 600 dpi ²
Operating System	Windows 98/ME, 2000, XP
Original Type	Sheet/book
Scanning Method	Original cover/SPF
Features	Scan to E-mail, Scan to Desktop, Scan to FTP
Output	8 pixels/bit, A/D 12 bit
Image Format	TIFF, PDF, JPEG
Network Interface	RJ45 Ethernet
Software	Sharpdesk™ Light (Ver. 2.7) Document Management software, includes OCR and Sharp Composer; Comes with 3 user license
Destination Management	6 one-touch scan destination keys managed through IMAGER Home Page (web-based management function supports LDAP)
Scanning Size	Letter, Legal, Ledger ²

¹ AR-EB7 Function Upgrade Kit required

² Ledger-size scanning or color scanning at 600 dpi requires 256 MB memory expansion for both AR-NB2 and AR-EB7

